



# Deck Defense®

High Performance Roof Underlayment  
Moisture protection for your home.



## Block water damage.

When it comes to your new roof, don't take chances. Ask for the moisture protection that Owens Corning® Deck Defense® *High Performance Roof Underlayment* can provide.

New *Deck Defense* underlayment's durable synthetic construction provides an immediate line of defense—so strong it can protect your roof for up to 6 months\* of UV exposure. It also acts as a secondary water-shedding barrier for your roof once shingles are installed. In addition, unlike standard felt underlayment, it comes with a 30-Year Limited Warranty:

A roof is a big investment. That's why it's important to make sure it's done right from the beginning to help ensure it's protected from water damage in the attic. One of the first steps to a high-performing roof is using underlayment in conjunction with shingles to help shield your home from moisture infiltration.



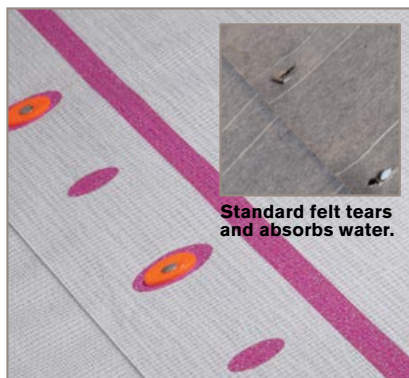
### Repels and protects

- Offers long-term moisture protection for your roof compared to standard felt underlayment
- Acts as a non-absorbent, secondary water-shedding barrier
- Reduces water intrusion when exposed



### Guards and withstands

- Helps shield your home during roof installation
- Protects the roof deck for up to 6 months\*\* of UV exposure
- 30-Year Limited Warranty\*



### Endures and performs

- Durable synthetic construction resists tearing when walked on
- Stays intact in high winds\*\*
- Designed to reduce the chance for tears that can cause leaks compared to felt underlayment





### Easy installation

- Extra-wide roll provides up to 5 times more coverage per roll than standard #30 felt underlayment
- Preprinted nailing pattern and overlap lines speed installation



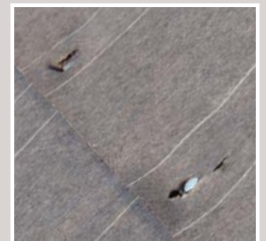
### High-traction, slip-resistant surface

- Specially engineered textured and coated top layer provides traction for a secure work area compared to other leading synthetic underlayments



## Deck Defense® vs. Organic Felt underlayment — the right choice is clear.

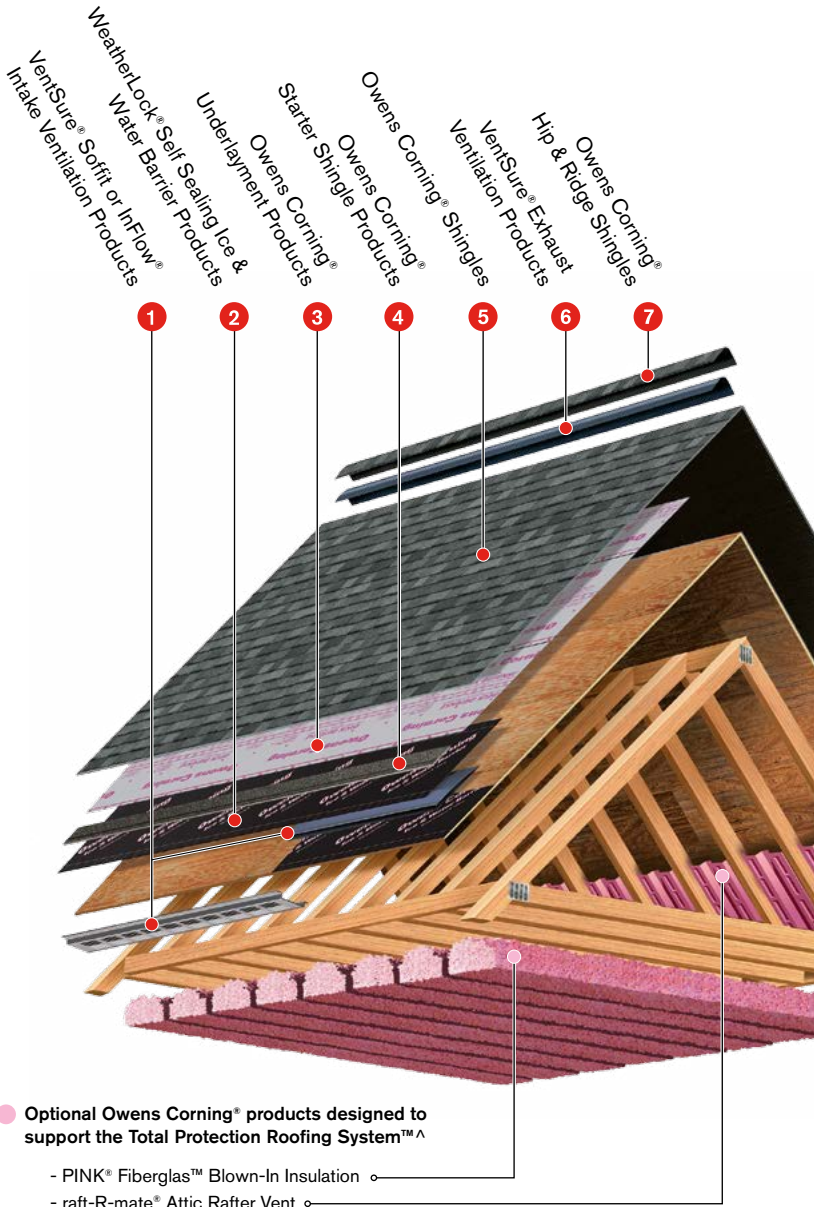
	Deck Defense® Underlayment	Conventional #30 Organic Felt
<b>Construction</b>	100% Engineered Polyolefin	Asphalt/Organic Felt
<b>Roll Size</b>	1,000 sq. ft., 48" wide	200 sq. ft., 36" wide
<b>Weight Per Square</b>	3.3 lbs. <sup>1</sup>	20 lbs.
<b>UV Exposure</b>	Can be left exposed for up to 6 months**	Needs to be covered immediately
<b>Warranty</b>	30-Year Limited Warranty*	No warranty
<b>Weather Performance</b>	Does not curl or wrinkle when exposed to moisture	May curl, wrinkle and crack when exposed to moisture
<b>Slip Resistance</b>	Unique woven technology and coated surface aides in traction, even when wet	May become slick or wrinkled in wet conditions, leading to an unsafe walking surface
<b>Nailing Pattern</b>	Nailing aids for proper application, both in standard and high wind areas	No nailing guides
<b>Durability</b>	Repels and sheds water	Absorbs water and moisture
<b>Surface Temperature</b>	Light gray color reduces roof temperature when exposed	Black color absorbs heat and increases roof temperature
<b>Tear Resistance</b>	Resistant to tearing, even when walked on or in high winds	Often tears during installation and fastening, causing leaks and rework



# The most important part of the roof? All of them.



It takes more than just shingles to protect your home. It takes an integrated system of components and layers designed to withstand the forces of nature outside while controlling temperature and humidity inside. The Owens Corning® Total Protection Roofing System™<sup>^</sup> gives you the assurance that all of your Owens Corning® roofing components are working together to help increase the performance of your roof — and to enhance the comfort and enjoyment of those who live beneath it.



## Product Attributes

### Warranty Length

30-Year Limited\*

### Application

Engineered for asphalt, tile and metal roof assemblies†

## Typical Values

Length	250 ft.
Width	48 in.
Nominal Weight per Roll	36 lbs. <sup>2</sup>
Coverage (with 3-in. overlap)	937 sq. ft.
Exposed Color	Light gray
Surface Construction	Coated textured poly

## Applicable Standards and Codes

ASTM D226

ASTM D4869

ASTM E108/UL 790 (Class A Fire Resistance)<sup>‡</sup>

Florida Product Approval

ICC-ES AC188

ICC-ESR 3229\*

Miami-Dade County Product Approval<sup>††</sup>

Want to know more about Owens Corning® products or find an Owens Corning Roofing Preferred Contractor in your area? It's easy to reach us:

**1-800-GET-PINK®**  
**www.owenscorning.com/roofing**



**OWENS CORNING ROOFING AND ASPHALT, LLC**  
ONE OWENS CORNING PARKWAY  
TOLEDO, OHIO, USA 43659

**1-800-GET-PINK®**  
**www.owenscorning.com/roofing**

Pub. No. 10010926-G. Printed in U.S.A. September 2015. THE PINK PANTHER™ & © 1964–2015 Metro-Goldwyn-Mayer Studios Inc. All Rights Reserved. The color PINK is a registered trademark of Owens Corning. © 2015 Owens Corning. All Rights Reserved.

(All Plants)

Owens Corning Roofing Preferred Contractors are independent contractors and are neither affiliates nor agents of Owens Corning Roofing and Asphalt, LLC, or its affiliated companies.

<sup>^</sup> Excludes non-Owens Corning® roofing products such as flashing, fasteners and wood decking.

\* See actual warranty for complete details, limitations and requirements.

\*\* Special application required for extended exposure. See installation instructions.

† For non-asphaltic roofing materials, check with the manufacturer as to the suitability of using Deck Defense® High Performance Roof Underlayment. Install following the roofing manufacturer's application instructions.

†† Applies for all areas that recognize Miami-Dade County Product Control Section.

‡ Underlayment is tested as part of a roof assembly that includes wood decking, underlayment and asphalt shingles.

# International Code Council Evaluation Services Acceptance Criteria for Alternative Asphalt Shingles.

1 Excludes core weight.

2 Includes core weight.