

i-LIGHTING®

LED Lighting Solutions

CABINETS, DECKS,
STAIRS, HARDSCAPES,
LANDSCAPES
**LED LIGHTING
SIMPLIFIED**



Image Courtesy of Deck Remodelers



Image Courtesy of Deck Remodelers





i-LIGHTING®
LED Lighting Solutions



YOU HAVE A VISION

WE HAVE THE LED LIGHTING SOLUTION FOR YOU

i-Lighting's LED lighting solutions are easy to install, reliable and affordable. They offer safety, security, and ambiance to any indoor or outdoor setting.

Generally, LED lighting can be expensive and difficult to install. With i-Lighting's patented Easy Plug™ Installation System and low voltage DC power supplies, both contractors and consumers can now afford and utilize LED lighting and take advantage of the many benefits of i-Lighting's LED products.



Under Cabinet	4
Decks & Patios	10
Stairs	16
Hardscape & Landscape	18
Power Supplies & Connector Cables	24
Custom Solutions	26

- Up to 90% Monthly savings in energy cost on electric bills.
- No more time and money spent on light bulb replacements.
- LED bulbs are not hot and will not cause burns.
- Insects are not attracted to LED lighting.

TURN YOUR VISION INTO AN EASY-TO-INSTALL,
AFFORDABLE & SAFE LED LIGHTING SOLUTION.



VISUALIZE WITH ANY KITCHEN

i-Lighting's ilumá™ under cabinet LED light strip is value priced, easy-to-install, and very versatile.

It is designed to cast task lighting down under cabinets, vertically wash across in-cabinet applications, as well as highlight toe kick areas.

ilumá™ LED light strips are encased in a durable black or white poly-carbonate tubing and can easily be installed on any indoor or outdoor application.

"I am totally blown away by how quick my lights were made and shipped to me! And when I opened the box, my picture I sent you of my kitchen was there and every bag was labeled...from the length of the wire to the size of light bar... What a great company...!"

Gary from Edwardsville, PA

UNDER CABINET LED LIGHTING SOLUTIONS



10MM ILUMA™ LIGHT STRIPS

iluma™ 10mm LED light strips are designed to provide the perfect amount of downward task lighting for projects big or small. Install under cabinets, shelves, or any overhang for an ample light solution. Each light strip is precut to fit cabinets from 9" to 36" wide or customized to fit any application.

#UC 10 | Features:

Fixture Size: 10mm (1/4" H x 1/2" W)

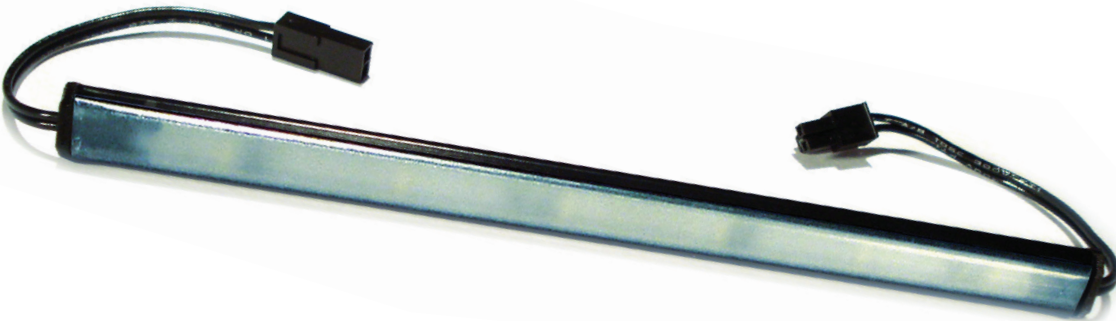
Color: Black or White

LED Color: Clear White or Warm Yellow

Wattage: 3 Watts per foot of light

Easy Plug™ Micro-Connectors

Frosted Poly-carbonate tubing





5MM ILUMA™ LIGHT STRIPS

iluma™ 5mm LED light strips are designed to provide directional lighting for accent lighting applications. The ultra thin profile makes them the perfect size to mount vertically and wash light across glass cabinet applications or horizontally above cabinets. The 5mm **iluma™** light strip can be mounted to a 90 degree bracket, making it ideal for highlighting toe kick areas.

#UC 5 | Features:

Fixture Size: 5mm (3/16" H x 1/4" W)

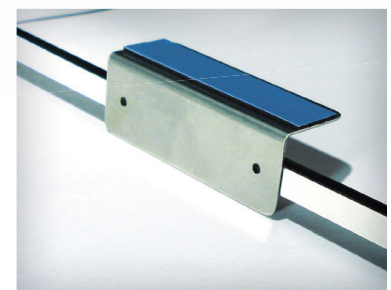
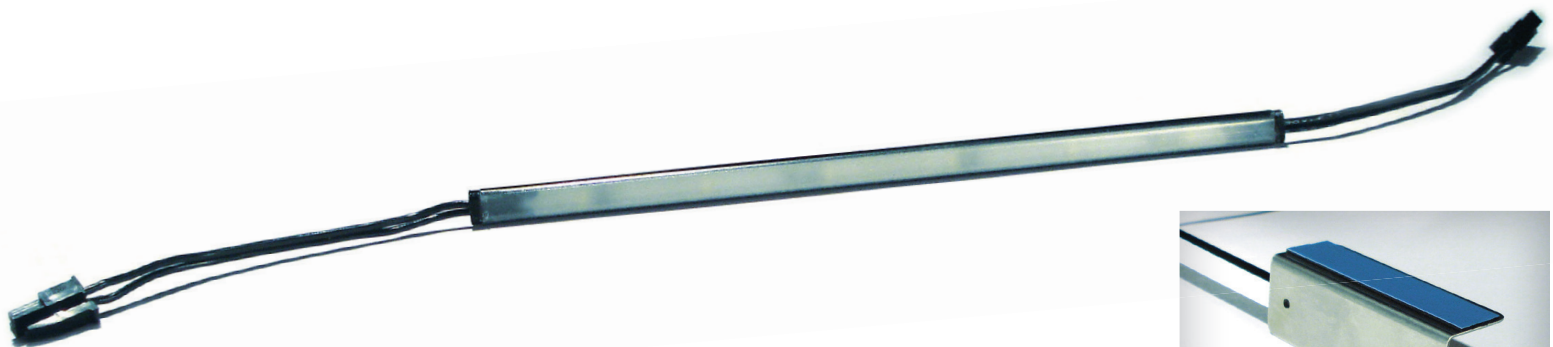
Color: Black or White

LED Color: Clear White or Warm Yellow

Wattage: 1.6 Watts per foot of light

Easy Plug™ Micro-Connectors

Frosted Poly-carbonate tubing



View of back side of Toe Kick.



INDOOR POWER SUPPLY

Plugs directly into 110 outlet. Regulated DC current lengthens the life of the system, as it only puts out the wattage needed to power the lights.

#UC PS | Features:

Fixture Sizes: 25 Watt - 3" x 2" x 1/4"
60 Watt - 5" x 2" x 1 1/4"
90 Watt - 6" x 2-1/4" x 1-1/4"

Wattage: 25, 60, or 90 Watts
6' power cord comes with
60 or 90 Watt P/S



PUSH BUTTON DIMMER

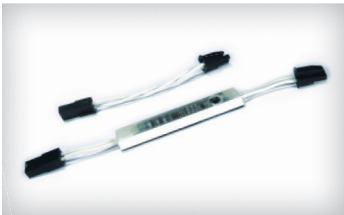
Push button to easily turn lights on/off. Press and hold button to dim and brighten the lights to desired light output.

#UC PB DIM | Features:

Fixture Size: 2" x 1" x 1/4"

Color: Black or White

Easy to mount under the cabinet
inline with light strips



IR DIMMER

Swipe hand underneath sensor to turn lights on/off. Hold hand under sensor to easily dim or brighten the lights to desired light output.

#UC IR DIM

Fixture Size: 3/16" H x 5/16" W

Color: Black or White

Easy to mount under the cabinet
inline with light strips



CONNECTOR CABLES

22 GA Easy Plug™ Micro-Connector extensions to easily connect the power supply to the **iluma** LED light strip and connect breaks between cabinets.

#UC EC | Features:

Size: Custom lengths available

Color: Black or White

22 GA Easy Plug™
Micro-Connector Cable



UL CONNECTOR CABLES

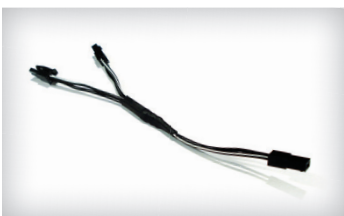
22 GA UL connector cables are jacketed for extra protection when installed behind drywall.

#UC UL | Features:

Size: Custom lengths available

Color: Grey

22 GA UL Easy Plug™
Micro-Connector Cable



SMALL Y-CONNECTOR

Three 3" leads in 22 GA wire to run lights or wiring in two directions.

#UC EC Y | Features:

Color: Black or White

22 GA small Y-connector with
Easy Plug™ Micro-Connectors

i-LIGHTING®
LED Lighting Solutions



VISUALIZE WITH ANY DECK

i-Lighting's 5mm **iluma™** LED light strip is designed to blend right into the railing, creating an invisible look on most composite, vinyl, aluminum and wood decks. The **iluma™** under rail lighting comes pre-made to fit 1'-10' railings with LEDs strategically placed for optimal lighting.

The 5mm **iluma™** is available in black or white poly-carbonate tubing. The brightness can be set to your exact desired light output utilizing i-Lighting's remote dimmer options.

i-Lighting offers a variety of deck lighting options. Between Post Lights, Post Cap Lights and **iluma™** Light Strips there is a deck lighting solution for you.

i-LIGHTING®
LED Lighting Solutions

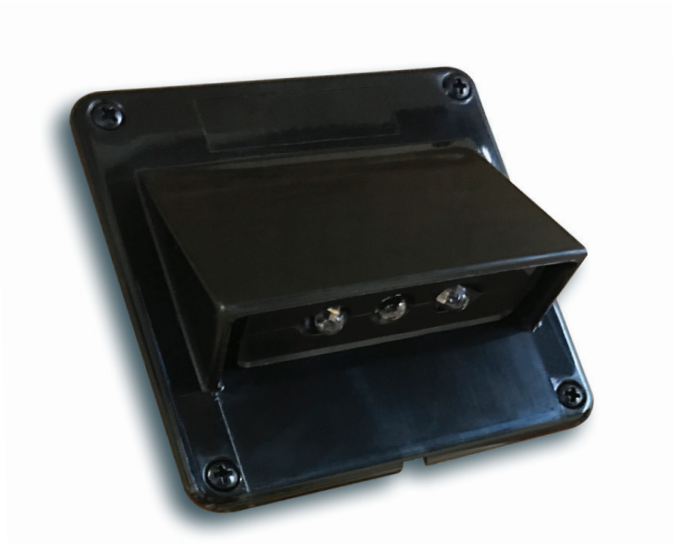
***“There’s no other product that matches the ease-of-use.
Projects that used to take a full day to install with
other systems, now only take a few hours. Everyone is
extremely happy with the results...”***

Ted, a Virginia Fence and Deck Builder



DECKS & PATIOS

LED LIGHTING SOLUTIONS



CHESAPEAKE POST LIGHT

Highlight the features of your deck with the elegant hood style Chesapeake Post Light Kit. Each kit comes with the necessary hardware and Easy Plug™ T-cable to connect to the next post.

#PL 519 | Features:

Fixture Size: 3-1/4" x 3-1/4" x 1"

Color: Black, Bronze, or White

LED Color: Clear White or Warm Yellow

Wattage: 0.7 milliamps

60" wire lead with Easy Plug™ connectors to travel up the post
Easy Plug™ "T" cable that extends 5' in each direction



MISSISSIPPI POST LIGHT

Brighten your outdoor gatherings with the Mississippi Post Light Kit that mounts flush and blends into the post. Each kit comes with the necessary hardware and Easy Plug™ T-cable to connect to the next post.

#PL 533 | Features:

Fixture Size: 2-7/8" x 2-7/8" x 1/2"

Color: Black, Bronze, or White

LED Color: Clear White or Warm Yellow

Wattage: 0.7 milliamps

60" wire lead with Easy Plug™ connectors to travel up the post
Easy Plug™ "T" cable that extends 5' in each direction



BOHEMIAN POST LIGHT

The surface mount Bohemian Post Light can be installed in a variety of locations. The light can tuck under the post cap or mount on the post while hiding all of the hardware. Each kit comes with the necessary hardware and Easy Plug™ T-cable to connect to the next post.

#PL 545 | Features:

Fixture Size: 3-1/4" x 1-3/4" x 1/2"

Color: Black, Bronze, or White

LED Color: Clear White or Warm Yellow

Wattage: 0.5 Watts

60" wire lead with Easy Plug™ connectors to travel up the post

Easy Plug™ "T" cable that extends 5' in each direction



DECKS & PATIOS

LED LIGHTING SOLUTIONS



PRINCIPIO POST CAP LIGHT

Illuminate all four sides of your post with i-Lighting's post cap light. The LEDs are recessed into the cap creating an invisible light effect. Pair with the adjustable adapter collar to fit a wood post.

#PC 500 | Features:

Fixture Size: 5" x 5" x 3"

Color: Black, Bronze, or White

LED Color: Clear White or Warm Yellow

Wattage: 1.5 Watts

60" wire lead with Easy Plug™ connectors to travel up the post
Easy Plug™ "T" cable that extends 5' in each direction

PRINCIPIO POST SKIRT

Create a universal look across your deck with the Principio Post Skirt that architecturally is designed to match the Principio Post Cap Light.

#PL SKIRT | Features:

Fixture Size: 6" x 6" x 1/8"

Color: Black, Bronze, or White

PRINCIPIO WOODEN ADAPTER COLLAR

Install the Principio Wooden Adapter Collar inside both the post cap and post skirt to reduce the size for easy installation on standard wooden posts.

#PL COLLAR | Features:

Color: Black, Bronze, or White



ILUMA™ UNDER RAIL LIGHTING

i-Lighting's 5mm **iluma™** LED light strips are designed to blend right into the railing, creating an invisible look on most composite, vinyl, aluminum and wood decks. The **iluma™** under rail lighting comes pre-made to fit 1'-10' railings with LEDs strategically placed for optimal lighting.

The 5mm **iluma™** is available in black or white poly-carbonate tubing. The brightness can be set to your desired light output utilizing i-Lighting's remote dimmer option.

#IL UR5 | Features:

Size: 5mm **iluma™**

Fixture Size: 5mm (3/16" H x 1/4" W)

Kit Length: Available in 2', 4', 6' or 8'

Color: Black or White

LED Color: Clear White & Warm Yellow

Wattage: 1.6 Watts per foot of light

Easy Plug™ Micro-Connectors

Custom lengths available



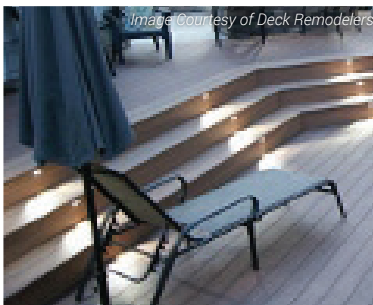


" The systems are an easy sell to customers looking to cost-effectively accent stairways and outdoor areas, while providing an additional layer of safety. "

Mike from a Quality Deck Building Business

VISUALIZE WITH ANY STAIRS

i-LIGHTING®
LED Lighting Solutions



MODERN STAIR LIGHT KIT*



i-Lighting's Modern Stair light Kit secures right to the riser and fits nicely underneath the overhang from the tread above. Each kit comes with 5 or 10 light fixtures, Easy Plug™ T-cables to daisy chain down the stairs and a DC power supply.

#SLK 532 | Features

Fixture Size: 2" x 3/4" x 3/4"

Color: Black, Bronze, or White

LED Color: Clear White or Warm Yellow

Wattage: 0.7 milliamps

ILUMA™ STAIR LIGHT KIT*



The ultra thin 5mm **iluma™** stair light creates an elegant invisible light effect on stairs made from any material. Each kit comes with 5 or 10 light fixtures, Easy Plug™ T-cables to daisy chain down the stairs and a DC power supply.

#ILSLK 5 | Features

Fixture Size: 3/16" H x 5/16" W

Lengths: 3"

Color: Black or White

LED Color: Clear White or Warm Yellow

Wattage: 1.6 watts per foot of light

BOHEMIAN STAIR LIGHT KIT*



The Bohemian Stair light Kit mounts right to the riser with hidden hardware. Each kit comes with 5 or 10 light fixtures, Easy Plug™ T-cables to daisy chain down the stairs and a DC power supply.

#SLK 545 | Features

Fixture Size: 3-1/4" x 1-3/4" x 1/2"

Color: Black, Bronze, or White

LED Color: Clear White or Warm Yellow

Wattage: 0.5 Watts

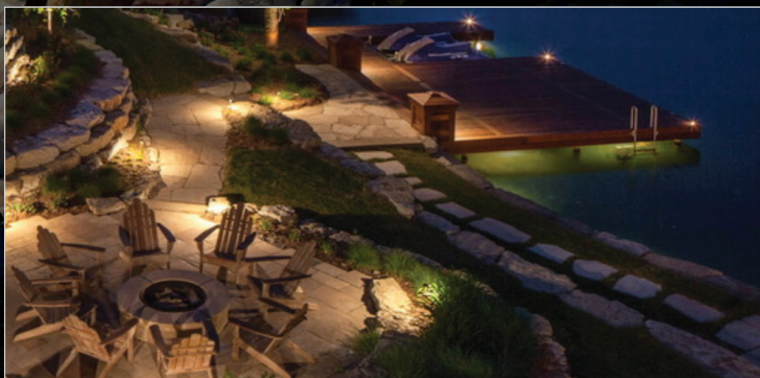
*Also available in Single Stair Light Kits, which include a light fixture and T-cable.

VISUALIZE WITH ANY HARDSCAPE & LANDSCAPE SETTINGS



"I've used i-Lighting products in more than 50 jobs and I haven't had a single challenge. All you have to do is plug it together and install."

Scott, a Dynamic Leader in Landscape Design Industry



HARDSCAPE & LANDSCAPE KITS

i-Lighting's Hardscape Lights

Illuminate masonry walls, columns and outdoor steps with i-Lighting's LED hardscape lights, featuring the Easy Plug™ Installation System. i-Lighting's LED Hardscape Lights are available in aluminum and our thin 5mm **iluma** hardscape strip light. Each Outdoor Hardscape Kit includes a patented Easy Plug™ T-cable extending 9 inches in two directions to allow lights to be daisy chained together without cutting or splicing. Used in conjunction with i-Lighting's Easy Plug™ Connector Cable to space lights where desired.

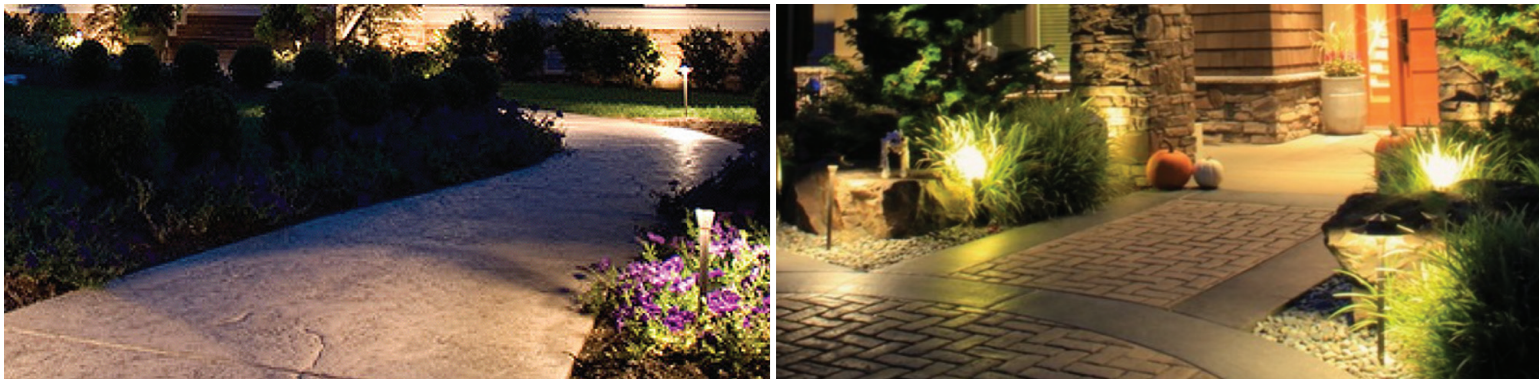
i-Lighting's Path Lights

Illuminate walkways and garden beds with i-Lighting's LED Signature Line Path Lights featuring the Easy Plug™ Installation System. i-Lighting's Signature Line Path Lights are available in solid brass, copper or aluminum. Each Outdoor Path Light kit includes one fixture and patented Easy Plug™ T-cable extending 6 inches in two directions to allow lights to be daisy chained together without cutting or splicing. Used in conjunction with i-Lighting's Easy Plug™ Connector Cable to space lights where desired.

i-Lighting's Up Lights

Illuminate focal points, trees, signs as well as up wash the front of your home with i-Lighting's LED Signature Line up light featuring the Easy Plug™ Installation System. The Signature Line Up Lights are available in both solid brass and aluminum. The light angle of the Signature Line Up Lights can easily be adjusted with no tools required. Each Signature Line Up Light kit includes one fixture and patented Easy Plug™ T-cable extending 6 inches in two directions to allow lights to be daisy chained together without cutting or splicing.

LANDSCAPING LED LIGHTING SOLUTIONS



SIGNATURE LINE BRASS PATH LIGHTS*

Our SOLID brass path lights provide a great amount of light for walkways and garden beds. Each LED Brass Path Light includes one brass path light and patented Easy Plug™ T-cable extending 6 inches in two directions to allow lights to be daisy chained together without cutting or splicing. Used in conjunction with i-lighting's Easy Plug™ Connector Cable to space lights where desired.

SIGNATURE LINE COPPER PATH LIGHTS*

The LED Copper Path Lights are two toned with a copper shade, solid copper post and brass fittings. Each Path Light includes one path light and patented Easy Plug™ T-cable extending 6 inches in two directions to allow lights to be daisy chained together without cutting or splicing.

SIGNATURE LINE ALUMINUM PATH LIGHTS*

The LED Aluminum Path Lights are die cast aluminum with a textured black finish. Each Path Light includes one path light and patented Easy Plug™ T-cable extending 6 inches in two directions to allow lights to be daisy chained together without cutting or splicing.

#BL (Brass)
#CL (Copper)
#AL (Aluminum)

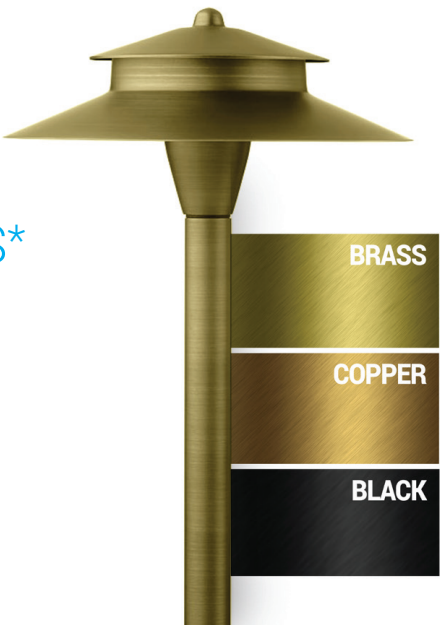
Standard Pole Height: 21"

Color: Brass, Copper, or Aluminum

LED Color: Clear White or Warm Yellow

Wattage: 1 Watt

6" Easy Plug™ T-cable



*Variety of styles available, please see website for details.



SIGNATURE LINE BRASS & ALUMINUM UP LIGHTS

Illuminate focal points, trees, signs as well as up wash the front of your home with i-Lighting's LED uplight featuring the Easy Plug™ Installation System. Each Outdoor Uplight kit includes one fixture and patented Easy Plug™ T-cable extending 6 inches in two directions to allow lights to be daisy chained together without cutting or splicing. No tools are required to adjust the light angle and focal point on the Signature Line Brass Up Light. Used in conjunction with i-Lighting's Easy Plug™ Connector Cable to space lights where desired.

"The quality of the Signature Line from i-Lighting is unsurpassed. Once the lights are in your hands you instantly feel the significant weight and extremely well made nature of their solid brass, copper and superior grade of cast aluminum."

Steve, Owner of HQ LED Lighting

#BL 24 (Small Brass)
#BL 25 (Large Brass)
#AL 26 (Aluminum)

Fixtures Size:

Small Brass: 6" x 2-1/2"
Large Brass: 7-1/2 - 9-3/4" x 2-1/4"
Aluminum: 6" x 2-1/2"

LED Color: Clear White or Warm Yellow

Wattage: 7 Watts

Adjustable shroud on brass Up Lights only

6" Easy Plug™ T-cable



SIGNATURE LINE LED WELL LIGHTS

i-Lighting's LED Well Lights are made from ABS composite with UV protection and provide a very sturdy up lighting option for any outdoor living area. i-Lighting's LED Well Lights are recessed into the ground to provide a very elegant lighting option. It is available with or without a shield cover to prevent debris from entering the well light.

#WL 235 / #WL 435

Fixtures Size : 8-1/4" x 5-3/4"

Color: Black or Brown

LED Color: Warm Yellow

Wattage: 6 Watts

6" Easy Plug™ T-cable



LANDSCAPE LIGHTING ACCESSORIES

Lighting Mounting Bracket – i-Lighting's mounting bracket is perfect for mounting the Signature Line up light to outdoor structures to provide directional lighting. The mounting bracket allows the up light to be mounted at a 90 degree angle and down wash an outdoor structure.



Tree Mount – i-Lighting's Tree Mount allows the mounting bracket to easily be installed on a rounded tree surface. Great for moonlighting within a tree.



Riser Extensions – i-Lighting's Riser Extensions allow the Signature line path and up lighting to be extended further off the ground for high growth and snow areas. The riser poles are available in 7", 10", 15" or 18" options or an adjustable riser pole from 12" to 22".

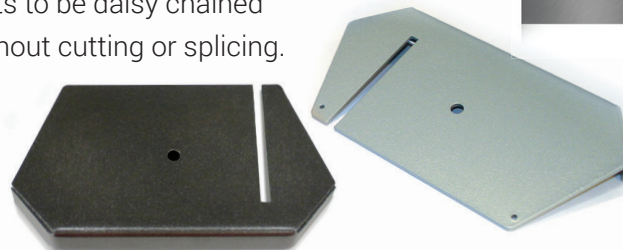


HARDSCAPING LED LIGHTING SOLUTIONS

ROCK RUN HARDSCAPE LIGHT

Showcase masonry walls, columns and pillars with i-lighting's hardscape light without the fear of bulbs burning out. When a light bulb fails on a traditional hardscape light the stone wall must be torn down to replace the fixture. i-lighting's LED hardscape light is rated to last 50,000 hours and is designed with easily removable and replaceable LEDs.

Each Outdoor Hardscape Kit includes a patented Easy Plug™ T-cable extending 6" in two directions to allow lights to be daisy chained together without cutting or splicing.



#ML18

Fixture Size: 6-1/2" L x 3-1/4" W x 3/4" D

Color: Black, Bronze, or Grey

LED Color: Clear White or Warm Yellow

Wattage: 0.75 Watts

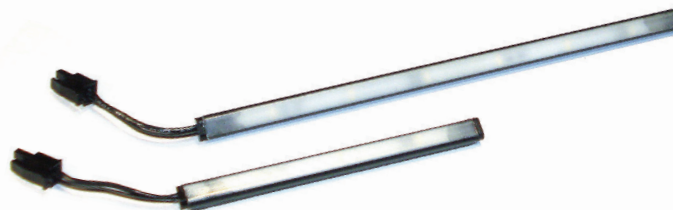
Powder coated aluminum housing

Removable LED bulb

Easy Plug™ T-cable with two 9" leads and a 30" lead for flexibility of light placement

ILUMA™ HARDSCAPE LIGHT

Designed to blend right into a masonry wall, column or any overhang, creating an invisible light effect. The **iluma™** Hardscape Light comes pre-cut in 3", 6", 9" and 12" lengths with i-lighting's patented Easy Plug™ T-cable.



#IL ML 5

Size: 5mm **iluma™**

Fixture Size: 5mm (3/16" H x 1/4" W)

Lengths: 3", 6", 9" or 12"

Color: Black or White

LED Color: Clear White or Warm Yellow

Wattage: 1.6 Watts per foot of light

Easy Plug™ T-cable with two 9" leads and a 30" lead for flexibility of light placement

LED LIGHTING SOLUTION ACCESSORIES



12 VOLT DC POWER SUPPLY

#DL 510 | Features:

Size:

25 Watt: 6"L x 5"H x 3.65"D
50 Watt: 9"L x 6"H x 3-3/4"D
75 Watt: 9"L x 6"H x 3-3/4"D
100 Watt: 9"L x 6"H x 3-3/4"D
150 Watt: 9"L x 6"H x 3-3/4"D

Wattages Available: in 25, 50, 75, 100,
or 150 Watts

6' outdoor rate power cord plugs directly
into 110 outlet

Photo eye assembly available on a 6' lead or
placed on the side of the power supply box

i-Lighting's LED lighting system operates
on direct current or DC power. With DC
power you can safely install i-Lighting's
Easy Plug™ Installation System without
the risk of shocking.



REMOTE DIMMER W/ TIMER

#RF TIM | Features:

The RF remote dimmer and timer
option communicates directly with
the power supply. The RF dimmer
gives you the option to dim or
brighten all of i-Lighting's outdoor
lights, along with the ability to have
the lights turn on at dusk and off
automatically 2, 4, or 8 hours later.



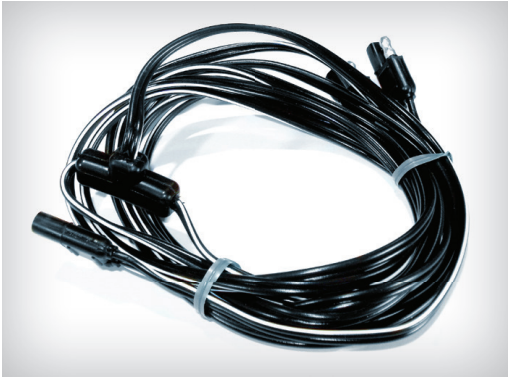
PHOTO EYE

#EYE | Features:

Standard 6' lead

Turns lights on/off automatically
at dusk and dawn.

i-LIGHTING®
LED Lighting Solutions



POST LIGHT TO STAIR LIGHT LINK

#DL SL Link | Features:

Easy Plug "T" harness that extends 5' in each direction

12" lead from "T" to connect to the stair harness

Install the post light to stair light link when lighting risers in between two post lights. The link allows you to continue down the stairs without breaking up the post light run.

EASY PLUG CONNECTOR CABLES

#EC 5 | Features:

Lengths: 15", 5', 10', 25', or 50'

16 GA wire

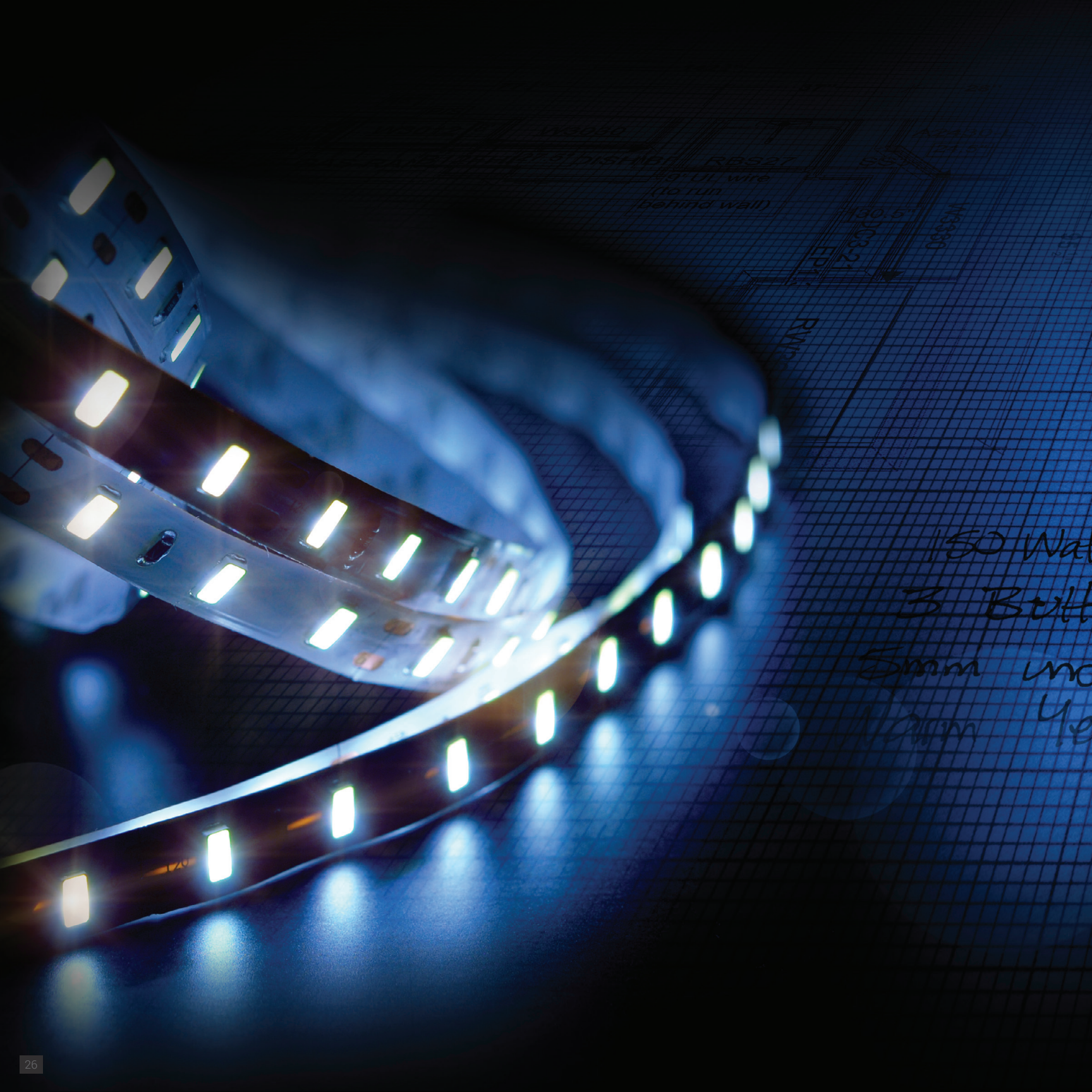
The Easy Plug™ connector cables make landscape and deck lighting installation fast and easy by simply daisy chaining together without the need for a home run back to the power supply.

Y-CONNECTOR

#EC 5 Y | Features:

Three 6" leads to split Easy Plug™ connector cables in two directions.





150 Watt
3 Butt
5mm und
Warm 4e

Power Supply w/ photocell
on Remote (or newer style)
Subrail LED Lights. Below



CUSTOM SOLUTIONS

i-Lighting also provides custom lighting solutions for outdoor structures, coves, walkways and outdoor kitchens. Our **iluma™** LED strip lighting is extremely versatile and can be customized to work on a variety of indoor and outdoor applications. Have something that is difficult to light? Contact i-Lighting today to receive a custom LED lighting solution.



i-LIGHTING®
LED Lighting Solutions

i-LIGHTING®
LED Lighting Solutions

SIMPLIFIED LED LIGHTING SOLUTIONS WITH EASE

LED Technology

Saves up to 90% in energy savings and generates no heat making them safe for children and pets while attracting less insects

DC Power Supply

Creates minimal line voltage drops and shocking hazards

Easy Plug Installations

Patented system installs in half the time as traditional systems

Courteous and Reliable Customer Service

i-Lighting is committed to unsurpassed customer service when you need it

888-305-4232 | iLightingLED.com | sales@ilightingLED.com

PLEASE CONTACT US NOW AND WE WILL GLADLY HELP
YOU PLAN AND DESIGN YOUR LIGHTING PROJECTS

i-Lighting, LLC | 500 Principio Parkway W. | Unit 300, North East, MD 21901